

The HER2 Support Group was established by Christine Druther, a health educator diagnosed with stage IV breast cancer in 1999. In the summer of 2001, she was pronounced to be in full remission! At that time, Christine envisioned an informational website that would be the focal point for women diagnosed with HER2 / NEU gene positive breast cancer.

### Our Philosophy

*“Through a team effort, this unique support group seeks to promote education by*

*maximizing available resources. We promise to assist members by supporting their concerns and providing links to the latest news and research available.”*



Christine Druther, MSPH  
Founder/Director,  
HER2 Support Group Org

Membership consists of a pool of highly motivated breast cancer patients (and their families) who overexpress the HER2 / NEU gene. Due to the nature of their disease, their present options are limited and they are constantly searching for new treatments leading to their survival. Her2 Support Group Org has been highly successful recruiting candidates for clinical trials through our website and we are constantly seeking trials which will benefit our members. Our members are actively involved in their treatments and utilize our website to provides them with the most current data to make educated treatment decisions. Clinical office visits are more productive when a patient has a thorough understanding of all available treatment options.

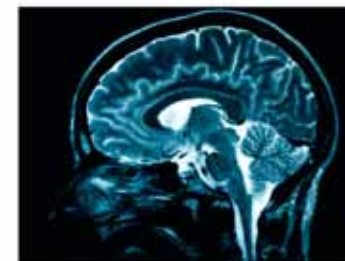
### Our Advocacy

The HER2 Support Group Org partners with other breast cancer support groups as well as the pharmaceutical and biotech industries in a collaborative effort to promote research and progress in the fight against cancer by:

- Posting newsworthy articles & press releases about the HER2 / NEU gene.
- Providing our members with ongoing and completed clinical trial information.
- Utilizing our greatest resource, our members, who are committed to sharing valuable information with other members.

Metastatic (secondary) brain tumors can occur when cancer cells migrate to the brain from the original site of the cancer. Studies have shown that as many as 50% of Stage IV breast cancer patients will eventually develop metastatic brain or CNS tumors.

New advances in HER2 targeted therapy drugs have increased survival rates thus increasing the long term risk of developing metastatic brain tumors.



With this knowledge and through our efforts, we have been instrumental in urging Stage IV breast cancer patients to request routine brain MRI's as part of their treatment plan. As a result, early stage brain metastases have been detected in many cases without prior symptoms.

HER2 Support Group Org provides education to make informed decisions, as well as provide treatment options and up-to-date research. Our message board is available for patients to give and gain confidence from their experiences. Links and clinical trials are provided for extra resources.